

The future of federated searching...today

WebFeat 3

WebFeat 3 raises the standard of federated searching, with a suite of powerful products designed to meet all research needs, from the casual novice to the discriminating professional.

WebFeat (US patent #6,807,539), the original federated search engine, used by over 1,500 leading public, academic, government and Global 1000 libraries and information centers brings you WebFeat 3, the next frontier in federated search technology. WebFeat 3 brings users a suite of powerful products with remarkable features and benefits:

WebFeat 3 Products:

WebFeat PRISM™ – searches all of your library's databases simultaneously, from a single intuitive interface. WebFeat can search any database, including subscription databases, free databases, catalogs, Z39.50, Telnet, proprietary databases – anything!

SMART™ – WebFeat's exciting next-generation COUNTER-compliant usage tracker, SMART, reports a wealth of information about database usage in your library. Track a variety of key metrics, including the number of searches and full text requests, most-requested search terms, and searches by individual, library, branch, or department. SMART even tracks native usage!

MyWebFeat™ – empowers users with the ability to manage their own WebFeat search environment. Configure favorite database menus, build alerts, save searches, even customize the look and feel!

WebFeat 3 Features:

WebFeat 3 includes the standard complement of WebFeat features, including custom user interfaces designed by libraries for their users, no-hassle WebFeat-hosting with 24x7 monitoring and maintenance, and, of-course, 100%compatibility with all of your library's databases.

Dynamic results – change results on-the-fly, from merge-sort-de-dupe to grouped by resource. Sort results by a variety of options, including relevancy, date, title, author, and publisher. WebFeat's innovative new results Shuffle option even takes advantage of content providers' own powerful relevancy options.

ProCite® and EndNote® compatibility – now you can save WebFeat results in a variety of formats, even export to bibliographic management packages like ProCite and EndNote!

Alerts – stay current on your favorite subjects with WebFeat Alerts! Save your searches and set the frequency of your updates. WebFeat automatically sends email alerts to the addresses you choose.

OpenURL – WebFeat is now compatible with all major OpenURL link resolvers! OpenURL links may actually be embedded within WebFeat results citations, enabling users to easily find e-articles with a mouse click.

Thesaurus – WebFeat transparently searches pre-selected thesauri, suggesting alternate search terms, which can be executed with a mouse-click. Thesauri choices include Library of Congress and MeSH.



3-1 Park Plaza
Old Brookville
NY 11545

V: 888 757 9119
F: 516 908 4311
E: prism@webfeat.org

<http://www.webfeat.org>

The original federated search engine

WebFeat PRISM™

WebFeat PRISM searches all of your library's databases simultaneously, from a single intuitive interface.

WebFeat PRISM (US Patent #6,807,539), the original federated search engine, is now used by over 1,500 leading public, academic, government and Global 1000 libraries and information centers – including over half of the top 20 largest U.S. public libraries and one out of every 10 Association of Research Libraries (ARL) institutions.

WebFeat PRISM enables users to search all of your library's databases simultaneously, from a single intuitive interface. WebFeat can search any database, including subscription databases, free databases, catalogs, Z39.50, Telnet, proprietary databases – anything! PRISM transparently manages all licensed database authentication methods for searches, search results, and full records – users never need to re-authenticate.

Features:

Compatibility – WebFeat PRISM is compatible with all searchable databases. Not some, but all. All web databases, all licensed databases, all standards-based databases, proprietary databases, Z39.50, XML, SQL anything!

Unlimited database search – PRISM can simultaneously search as many databases as you like. It's not a toy restricted to a handful of sources. PRISM is a serious research tool capable of simultaneously searching hundreds of research sources.

No hassle – WebFeat builds and maintains your WebFeat system. We'll even host your system at no additional charge! WebFeat transparently monitors your system and database translators and upgrades them as needed.

True native results – PRISM presents full text results within their true native interfaces. All native functions are fully functional, enabling the user to email, print, or refine searches from within the native interface.

Customizability – the remarkable WebFeat user interface can be custom designed and seamlessly integrated into your library's own web pages.

Dynamic results – change results on-the-fly, from merge-sort-de-dupe to grouped by resource. Sort results by a variety of options, including relevancy, date, title, author, and publisher. WebFeat's innovative new results Shuffle option even takes advantage of content providers' own powerful relevancy options.

Thesaurus – WebFeat transparently searches pre-selected thesauri, suggesting alternate search terms, which can be executed with a mouse-click. Thesauri choices include Library of Congress and MeSH.

ProCite®, EndNote® & RefWorks compatibility – now you can save WebFeat results in a variety of formats, even export to bibliographic management packages like ProCite, EndNote, and RefWorks!

Alerts – stay current on your favorite subjects with WebFeat Alerts! Save your searches and set the frequency of your updates. WebFeat automatically sends email alerts to the addresses you choose.

OpenURL – WebFeat is now compatible with all major OpenURL link resolvers! OpenURL links may actually be embedded within WebFeat results citations, enabling users to easily find e-articles with a mouse click.



3-1 Park Plaza
Old Brookville
NY 11545

V: 888 757 9119
F: 516 908 4311
E: prism@webfeat.org

<http://www.webfeat.org>

Power to the user

MyWebFeat™

MyWebFeat enables users to craft their very own personal search environment.

With MyWebFeat, your users can now customize their very own WebFeat experience. Organize and display databases according to personal requirements. Create and populate subject categories to match individual research goals. Users can even modify the look and feel of their WebFeat search environment by selecting from an assortment of attractive presentation templates.

And within MyWebFeat, users can manage the way results are returned, opting to save results of a single search or receive alerts that run at a frequency the user sets.

Features:

Build custom database menus – puts the user in charge, enabling them to select the databases they need and organize them in a way that makes sense for their research requirements.

Categorize – users can create subject categories and populate them with their favorite databases.

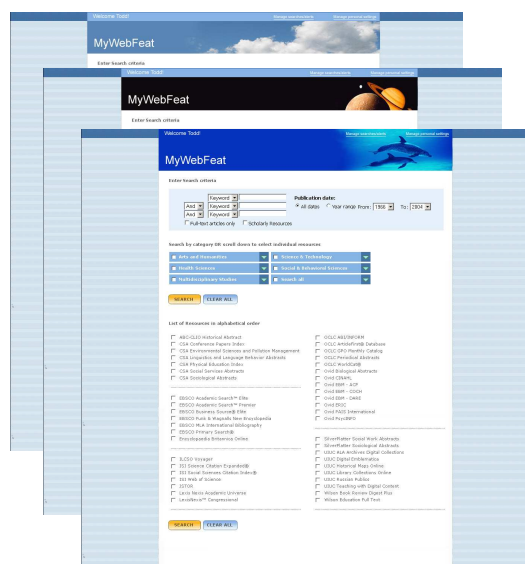
Alert – lets users stay current on their favorite subjects. With WebFeat Alerts, users simply save searches and set the frequency of their updates. WebFeat automatically sends email alerts to the chosen addresses.

Save and retrieve searches – searches can be saved and re-executed whenever the user wishes.

Export to ProCite® and EndNote® – now users can save WebFeat results in a variety of formats, even export to bibliographic management packages like ProCite and EndNote!

Dynamic results – change results on-the-fly, from merge-sort-de-dupe to grouped by resource. Sort results by a variety of options, including relevancy, date, title, author, and publisher. WebFeat's innovative new results Shuffle option even takes advantage of content providers' own powerful relevancy options.

Special Library administration features – in corporate and government libraries and information centers, WebFeat system administrators can use MyWebFeat's administration console to create multiple user profiles—including organization preferences, presentation, and notification options—for different departments, workgroups, or individual searchers. When used in concert with our SMART™ next-generation usage tracker, MyWebFeat can generate highly granular usage reports.



3-1 Park Plaza
Old Brookville
NY 11545

V: 888 757 9119
F: 516 908 4311
E: prism@webfeat.org

<http://www.webfeat.org>

COUNTER-compliant usage tracking

SMART™

The most sophisticated database usage tracking and reporting system - ever.

Tracking database usage is a time-consuming chore. From the time required to request usage information from content providers to the time required to massage the data into a normalized format.

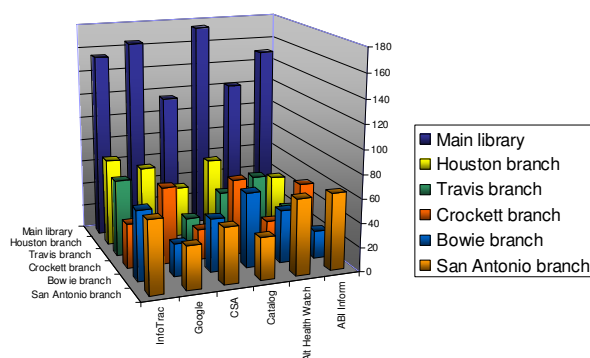
SMART (Statistical Measures Available Real Time) is the most sophisticated database usage tracking and reporting system ever developed. With SMART, you can track and report the usage of any database integrated into your WebFeat system. Generate reports with a mouse click. Find out instantly how databases are used in your library. Track statistics on any WebFeat database, including subscription databases, OPACs, free databases, proprietary databases, Z39.50, Telnet - anything!

SMART logs and reports key metrics for each database, including number of search requests, number of full record/next set requests, search terms/arguments, location, and date/time information. SMART can provide granular information on usage by individual library, branch, or department.

SMART offers convenient standard web reports, as well as the option to download usage information into your favorite spreadsheet, DBMS, or statistical analysis package for further analysis. Web reports include tabular presentation, as well as graphical displays for trend analysis.

Now, within seconds, you can have sophisticated usage reports and trend analysis at your fingertips. Determine which databases require more concurrent user licenses and which need to be weeded. View usage patterns by location. Use query term analysis to feed collection development.

Activity by Database				
Database	Searches	Next Page	Full Text	Total
Informa	40790	0	0	40790
ABI/INFORM Global	42448	218	598	43264
ABI/INFORM Trade and industry	4288	28	332	4648
AP Photo Archive	47708	0	0	47708
Access Science	4418	0	136	4554
Acxiom Business Directory	2175	0	0	2175
Acxiom Residential Directory	2193	0	0	2193
Alt-Health Watch	54715	419	889	56003
Alternative Health Watch	54715	419	889	56003
Ancestry.com (free)	125	0	0	125
Books in Print with Book Reviews	38794	20	420	39234
Business and Company Resource Center	2415	0	0	2415
COResearcher	10	0	0	10
Columbian	211	0	0	211
Computer Database	42888	0	0	42888
Disclosure Global Access	2779	0	2	2781
Dun & Bradstreet Million Dollar Database	20	0	0	20
Electric Library	1376	0	148	1524
Electric Library Elementary	1352	0	83	1435
Encyclopedia Americana Online	13721	0	0	13721
Ethnic Newswatch	300	0	0	300
Expanded Academic ASAP	55037	0	2	55039
Facts.com	2879	8	108	2995
Gale Acxiom Infobase Phone Directory	32	0	0	32
Gale Discovering Collection	34483	0	0	34483
GaleNet - Biography Resource Center	34131	0	0	34131
GaleNet - What Do I Read Next	54505	0	2	54507
GaleNet Associations Unlimited	426	0	0	426
General Business File ASAP	1383	0	0	1383
General Reference Center	55029	0	0	55029
Grove Dictionary of Art	2180	0	0	2180



3-1 Park Plaza
Old Brookville
NY 11545

V: 888 757 9119
F: 516 908 4311
E: prism@webfeat.org

<http://www.webfeat.org>